

Scroll Compressors



Embrital

Hermetic Compressors Distribution in Europe

A/C & Chiller Application - YH SERIES R407C (R134a**)

| Model | Power Source [ph/V/Hz] | Cooling Capacity [W] | COP [W/W] | Displacement | | Power [HP] | Weight [Kg] | Diameter / Height [mm] |
|-------------|---------------------------|-------------------------|-----------|--------------|--------|---------------|----------------|---------------------------|
| | | | | [cc/rev] | [m³/h] | | | |
| YH69T1 | 3ph 380-420/50-60 | 6.530 | 3,02 | 38,5 | 6,7 | 2,0 | 30 | 168 / 418 |
| YH89T1 | 3ph 380-420/50-60 | 8.540 | 3,19 | 49,4 | 8,6 | 3,0 | 30 | 168 / 418 |
| YH104T1 | 3ph 380-420/50-60 | 10.180 | 3,19 | 59,2 | 10,3 | 3,5 | 31 | 168 / 418 |
| YH119T1 | 3ph 380-420/50-60 | 11.420 | 3,22 | 66,1 | 11,5 | 4,0 | 31 | 168 / 418 |
| YH128T1 | 3ph 380-420/50-60 | 12.290 | 3,28 | 71,3 | 12,4 | 4,3 | 31 | 168 / 418 |
| YH133T1 | 3ph 380-420/50-60 | 12.770 | 3,27 | 74,1 | 12,9 | 4,5 | 31 | 168 / 418 |
| YH140T1 | 3ph 380-420/50-60 | 13.440 | 3,25 | 77,6 | 13,5 | 4,7 | 31 | 168 / 418 |
| YH150T1 | 3ph 380-420/50-60 | 14.400 | 3,27 | 83,3 | 14,5 | 5,0 | 31 | 168 / 418 |
| YH175T1 | 3ph 380-420/50-60 | 16.510 | 3,28 | 97,1 | 16,9 | 6,0 | 35 | 168 / 463 |
| YH200T1 | 3ph 380-420/50-60 | 20.110 | 3,40 | 108,0 | 18,8 | 7,0 | 35 | 168 / 463 |
| YH230T1 | 3ph 380-420/50-60 | 22.180 | 3,28 | 123,0 | 21,4 | 8,0 | 53 | 197 / 505.7 |
| YH266T1 | 3ph 380-420/50-60 | 25.530 | 3,28 | 142,0 | 24,7 | 9,0 | 53 | 197 / 505.7 |
| YH307T1 | 3ph 380-420/50-60 | 29.470 | 3,31 | 167,2 | 29,1 | 10,0 | 54 | 197 / 505.7 |
| YH355T1 | 3ph 380-420/50-60 | 34.080 | 3,33 | 189,1 | 32,9 | 12,0 | 54 | 197 / 505.7 |
| YSH450T1G * | 3ph 380-420/50-60 | 44.340 | 3,31 | 255,8 | 44,5 | 15,0 | 98 | 246 / 671.2 |
| YH610T1G | 3ph 380-420/50-60 | 58.100 | 3,32 | 332,6 | 57,9 | 20,0 | 100 | 246 / 671.2 |
| YH720T1G | 3ph 380-420/50-60 | 68.350 | 3,35 | 391,8 | 68,2 | 25,0 | 104 | 246 / 671.2 |

* Semi-Hermetic scroll

** Cooling Capacity in R134a = 2/3 Cooling Capacity in R407C

A/C & Chiller Application - YH SERIES R410A

| Model | Power Source [ph/V/Hz] | Cooling Capacity [W] | COP [W/W] | Displacement | | Power [HP] | Weight [Kg] | Diameter / Height [mm] |
|------------|---------------------------|-------------------------|-----------|--------------|--------|---------------|----------------|---------------------------|
| | | | | [cc/rev] | [m³/h] | | | |
| YH95C1 | 3ph 380-420/50-60 | 9.500 | 3,00 | 38,5 | 6,7 | 3,5 | 30,0 | 168 / 418 |
| YH119C1 | 3ph 380-420/50-60 | 11.900 | 3,06 | 46,0 | 8,0 | 4,0 | 31,0 | 168 / 418 |
| YH128C1 | 3ph 380-420/50-60 | 12.800 | 3,06 | 49,4 | 8,6 | 4,3 | 31,0 | 168 / 418 |
| YH150C1 | 3ph 380-420/50-60 | 15.000 | 3,09 | 59,2 | 10,3 | 5,0 | 31,0 | 168 / 418 |
| YH175C1 | 3ph 380-420/50-60 | 17.300 | 3,12 | 66,1 | 11,5 | 6,0 | 35,0 | 168 / 463 |
| YH183C1 | 3ph 380-420/50-60 | 18.300 | 3,15 | 71,3 | 12,4 | 6,5 | 35,0 | 168 / 463 |
| YH200C1 | 3ph 380-420/50-60 | 19.600 | 3,16 | 74,7 | 13,0 | 7,0 | 35,0 | 168 / 463 |
| YH230C1 | 3ph 380-420/50-60 | 23.000 | 3,19 | 90,8 | 15,8 | 8,0 | 53,0 | 197 / 505.7 |
| YH266C1 | 3ph 380-420/50-60 | 26.600 | 3,19 | 100,0 | 17,4 | 9,0 | 53,0 | 197 / 505.7 |
| YH292C1 | 3ph 380-420/50-60 | 29.200 | 3,22 | 107,5 | 18,7 | 10,0 | 54,0 | 197 / 505.7 |
| YH325C1 | 3ph 380-420/50-60 | 32.500 | 3,22 | 123,0 | 21,4 | 11,0 | 54,0 | 197 / 505.7 |
| YH355C1 | 3ph 380-420/50-60 | 34.800 | 3,22 | 131,6 | 22,9 | 12,0 | 54,0 | 197 / 505.7 |
| YSH400C1 * | 3ph 380-420/50-60 | 39.500 | 3,15 | 145,4 | 25,3 | 13,0 | 90,0 | 240 / 529.9 |
| YSH450C1 * | 3ph 380-420/50-60 | 44.500 | 3,15 | 167,2 | 29,1 | 15,0 | 90,0 | 240 / 529.9 |
| YH610C1G | 3ph 380-420/50-60 | 62.600 | 3,22 | 235,6 | 41,0 | 20,0 | 100,0 | 246 / 671.2 |
| YH720C1G | 3ph 380-420/50-60 | 71.200 | 3,26 | 269,0 | 46,8 | 25,0 | 104,0 | 246 / 671.2 |
| YH880C1G | 3ph 380-420/50-60 | 86.000 | 3,31 | 332,6 | 57,9 | 30,0 | 108,0 | 246 / 671.2 |

* Semi-Hermetic Scroll

Rated Test Condition:

Condensing Temperature: 54.4°C

Evaporating Temperature: 7.2°C

Liquid Temperature: 46.1°C

Suction Temperature: 18.3°C

Ambient Temperature: 35.0°C

Heat Pump Application - YW SERIES R407C

| Model | Power Source [ph/V/Hz] | Heating Capacity [W] | COP [W/W] | Displacement | | Power [HP] | Weight [Kg] | Diameter / Height [mm] |
|-------------|---------------------------|-------------------------|-----------|--------------|--------|---------------|----------------|---------------------------|
| | | | | [cc/rev] | [m³/h] | | | |
| YW75T1 | 3ph 380-420/50-60 | 10.020 | 3,72 | 46,6 | 8,1 | 3,0 | 30,0 | 168 / 418 |
| YW110T1 | 3ph 380-420/50-60 | 14.650 | 3,76 | 67,8 | 11,8 | 4,0 | 31,0 | 168 / 418 |
| YW135T1 | 3ph 380-420/50-60 | 17.840 | 3,84 | 83,3 | 14,5 | 5,0 | 31,0 | 168 / 418 |
| YW160T1 | 3ph 380-420/50-60 | 21.150 | 3,84 | 98,3 | 17,1 | 6,0 | 35,0 | 168 / 463 |
| YW185T1 | 3ph 380-420/50-60 | 25.210 | 3,79 | 108,0 | 18,8 | 7,0 | 35,0 | 168 / 463 |
| YW205T1 | 3ph 380-420/50-60 | 27.130 | 3,82 | 123,0 | 21,4 | 8,0 | 53,0 | 197 / 505.7 |
| YW245T1 | 3ph 380-420/50-60 | 32.370 | 3,84 | 145,4 | 25,3 | 9,0 | 53,0 | 197 / 505.7 |
| TW285T1 | 3ph 380-420/50-60 | 37.520 | 3,88 | 167,2 | 29,1 | 10,0 | 54,0 | 197 / 505.7 |
| YW320T1 | 3ph 380-420/50-60 | 42.060 | 3,89 | 189,1 | 32,9 | 12,0 | 54,0 | 197 / 505.7 |
| YSW340T1G * | 3ph 380-420/50-60 | 44.450 | 3,79 | 216,7 | 37,7 | 13,0 | 90,0 | 240 / 529.9 |
| YSW400T1G * | 3ph 380-420/50-60 | 52.900 | 3,70 | 244,3 | 42,5 | 15,0 | 90,0 | 240 / 529.9 |

* Semi-Hermetic Scroll

Heat Pump Application - YW SERIES R410A

| Model | Power Source [ph/V/Hz] | Heating Capacity [W] | COP [W/W] | Displacement | | Power [HP] | Weight [Kg] | Diameter / Height [mm] |
|------------|---------------------------|-------------------------|-----------|--------------|--------|---------------|----------------|---------------------------|
| | | | | [cc/rev] | [m³/h] | | | |
| YW75C1 | 3ph 380-420/50-60 | 11.040 | 3,66 | 32,2 | 5,6 | 3,0 | 30,0 | 168 / 418 |
| YW110C1 | 3ph 380-420/50-60 | 15.900 | 3,71 | 46,6 | 8,1 | 4,5 | 31,0 | 168 / 418 |
| YW135C1 | 3ph 380-420/50-60 | 19.400 | 3,75 | 59,2 | 10,3 | 5,0 | 31,0 | 168 / 418 |
| YW160C1 | 3ph 380-420/50-60 | 22.200 | 3,76 | 67,8 | 11,8 | 6,0 | 40,0 | 168 / 463 |
| YW185C1 | 3ph 380-420/50-60 | 23.860 | 3,76 | 77,0 | 13,4 | 7,0 | 40,0 | 168 / 463 |
| YW270C1 | 3ph 380-420/50-60 | 37.280 | 3,81 | 115,5 | 20,1 | 10,0 | 53,0 | 197 / 505.7 |
| YW300C1 | 3ph 380-420/50-60 | 41.350 | 3,83 | 127,6 | 22,2 | 11,0 | 53,0 | 197 / 505.7 |
| YW320C1 | 3ph 380-420/50-60 | 43.410 | 3,83 | 131,6 | 22,9 | 12,0 | 54,0 | 197 / 505.7 |
| YSW340C1 * | 3ph 380-420/50-60 | 46.950 | 3,81 | 143,1 | 24,9 | 13,0 | 54,0 | 240 / 529.9 |
| YSW400C1 * | 3ph 380-420/50-60 | 55.230 | 3,81 | 167,2 | 29,1 | 15,0 | 54,0 | 240 / 529.9 |
| YW550C1G | 3ph 380-420/50-60 | 65.750 | 4,36 | 235,6 | 41,0 | 15,0 | 104,0 | 246.5 / 671.2 |
| YW630C1G | 3ph 380-420/50-60 | 71.600 | 4,33 | 256,9 | 44,7 | 20,0 | 104,0 | 246.5 / 671.2 |

* Semi-Hermetic Scroll

EVI Configuration available for all YW SERIES models

Rated Test Condition:

Condensing Temperature: 55.0°C

Evaporating Temperature: 5.0°C

Liquid Temperature: 46.1°C

Suction Temperature: 16.1°C

Ambient Temperature: 35.0°C

Heat Pump Application – YW SERIES R134a

| Model | Power Source [ph/V/Hz] | Heating Capacity [W] | COP [W/W] | Displacement | | Power [HP] | Weight [Kg] | Diameter / Height [mm] |
|------------|---------------------------|-------------------------|--------------|--------------|--------|---------------|----------------|---------------------------|
| | | | | [cc/rev] | [m³/h] | | | |
| YW38J1 | 3ph 380-420/50-60 | 5.000 | 4,17 | 32,2 | 5,60 | 2,0 | 29,0 | 168 / 418 |
| YW55J1 | 3ph 380-420/50-60 | 7.180 | 4,25 | 45,0 | 7,82 | 3,0 | 30,0 | 168 / 418 |
| YW80J1 | 3ph 380-420/50-60 | 10.430 | 4,28 | 65,5 | 11,40 | 4,0 | 31,0 | 168 / 418 |
| YW100J1 | 3ph 380-420/50-60 | 13.000 | 4,30 | 80,5 | 14,00 | 5,0 | 31,0 | 168 / 418 |
| YW120J1 | 3ph 380-420/50-60 | 15.530 | 4,30 | 94,9 | 16,51 | 6,0 | 35,0 | 168 / 463 |
| YW132J1 | 3ph 380-420/50-60 | 16.500 | 4,30 | 102,7 | 17,87 | 6,5 | 35,0 | 168 / 463 |
| YW180J1 | 3ph 380-420/50-60 | 23.450 | 4,30 | 140,4 | 24,43 | 9,0 | 53,0 | 197 / 505.7 |
| YW200J1 | 3ph 380-420/50-60 | 25.540 | 4,30 | 161,5 | 28,10 | 10,0 | 54,0 | 197 / 505.7 |
| YW240J1 | 3ph 380-420/50-60 | 29.220 | 4,35 | 182,6 | 31,77 | 12,0 | 54,0 | 197 / 505.7 |
| YSW265J1 * | 3ph 380-420/50-60 | 34.910 | 4,15 | 216,7 | 37,70 | 13,0 | 90,0 | 240 / 529.9 |
| YSW290J1 * | 3ph 380-420/50-60 | 38.210 | 4,15 | 244,3 | 42,50 | 15,0 | 90,0 | 240 / 529.9 |

* Semi-Hermetic Scroll

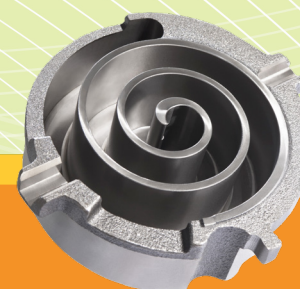
Heat Pump Application – YIW INVERTER SERIES R134a/R410A

| Model | Driver Power Source [ph/V/Hz] | Heating Capacity [W] | COP [W/W] | Displacement | | Range [rps] | Weight [Kg] | Diameter / Height [mm] |
|----------|----------------------------------|-------------------------|--------------|--------------|--------|----------------|----------------|---------------------------|
| | | | | [cc/rev] | [m³/h] | | | |
| YIW60E1G | 3ph 380-420/50-60 | 11.440 | 4,35 | 60,0 | 10,44 | 20-100 | 27,0 | 168 / 419 |
| YIW72E1G | 3ph 380-420/50-60 | 13.712 | 4,35 | 72,0 | 12,53 | 20-100 | 27,0 | 168 / 419 |
| YIW38C1G | 3ph 380-420/50-60 | 16.400 | 3,87 | 38,0 | 6,61 | 20-100 | 27,0 | 168 / 419 |
| YIW50C1G | 3ph 380-420/50-60 | 20.720 | 3,87 | 50,0 | 8,70 | 20-100 | 27,0 | 168 / 419 |
| YIW60C1G | 3ph 380-420/50-60 | 24.560 | 3,96 | 60,0 | 10,44 | 20-100 | 29,0 | 168 / 419 |
| YIW72C1G | 3ph 380-420/50-60 | 29.440 | 3,96 | 72,2 | 12,53 | 20-100 | 29,0 | 168 / 419 |

Rated Test Condition:

Condensing Temperature: 55.0°C
 Evaporating Temperature: 5.0°C
 Liquid Temperature: 46.1°C
 Suction Temperature: 16.1°C
 Ambient Temperature: 35.0°C

EVI Configuration available for all YW/YIW SERIES models



10/2020

Embrital

Hermetic Compressors Distribution in Europe



Viale Lino Zanussi 8/c
 33170 Pordenone (Italy)
 Tel. +39 0434 572711
 Fax +39 0434 571770
 info@embrital.com
 www.embrital.com