

Ref. No.	LGACC-041111-195
Date	Nov. 11. 2004
Rev. No.	REV. 0
Rev. Date	-

1. Specification

1.1 Compressor

1	Compressor Model Name	GJ222PAA
2	Compressor Type	Hermetic Motor Compressor
3	Compression Type	Rotary (Rolling Piston Type)
4	Displacement	22.2 cm ³ / rev
5	Refrigerant	R410A
6	Oil / Oil Charging Amount	FVC68D / 500 ± 10 cc
7	Nitrogen Gas Holding Pressure	0.8 ± 0.2 kg / cm ² G
8	Painting	Black Color Paint
9	Net Weight (Including Oil)	16.5 kg
10	Suction Tube I.D.	Φ 12.8 $\begin{matrix} +0.15 \\ -0 \end{matrix}$
11	Discharge Tube I.D.	Φ 9.7 ± 0.15

1.2 Motor

Pole / Rated Output	2 POLE / 1560 [W]	
Power Source	1 PH - 220/240 V - 50 Hz	
Rated Revolution	2830/2846 rpm	
Insulation Class	E CLASS	
Winding Resistance (at 25°C)	Main	2.07 ± 7 % [Ω]
	Sub	3.01 ± 7 % [Ω]

Ref. No.	LGACC-041111-195
Date	Nov. 11. 2004
Rev. No.	REV. 0
Rev. Date	-

1.3 Performance

	at 220V	at 240 V
Cooling Capacity [BTU/h]	18,500	18,700
(± 5%) [Watts]	5,421	5,480
Power Input (± 5%) [Watts]	1,867	1,928
E.E.R.(± 5%) [BTU/Wh ,(kcal/Wh)]	9.9 (2.90)	9.7 (2.84)
Running Current [A]	8.8	8.6
Locked Rotor Ampere [A]	-	43
Sound Pressure Level [dB(A)]	-	62 ± 2
Vibration [gal]	-	3000 Max

Starting Condition	Specification	Pressure Condition
at Normal Condition	start at 90% of Rated Voltage (198 Volt)	Ps / Pd = 9.12 / 33.45 kg/cm ² G
at Overload Condition	start at 95% of Rated Voltage (209 Volt)	Ps / Pd = 10 / 42 kg/cm ² G

※) Rating Conditions

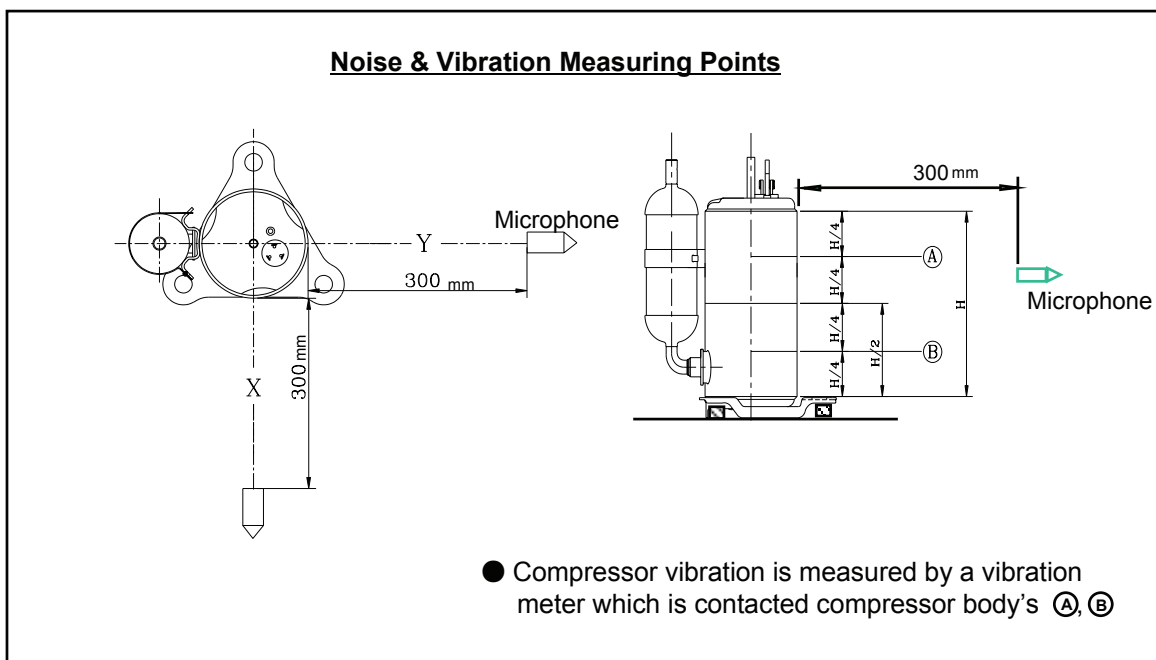
Cond. Temp. : 54.4 °C (130 °F)

Return Gas Temp. : 35.0 °C (95.0 °F)

Evap. Temp. : 7.2 °C (45 °F)

Liquid Temp. : 46.1 °C (114.9 °F)

Ambient Temp. : 35.0 °C (95 °F)



Ref. No.	LGACC-041111-195
Date	Nov. 11. 2004
Rev. No.	REV. 0
Rev. Date	-

1.4 Others

Leak Tight Pressure	High Pressure Side	40 kg/cm ² G
	Lower Pressure Side	- kg/cm ² G
Hydrostatic Strength Pressure	High Pressure Side	170 kg/cm ² G
	Lower Pressure Side	80.0 kg/cm ² G
Insulation Resistance (with 500V D.C Mega Tester)		50 MΩ Min.
Withstand Voltage		at 1,800V - 1 min.(2,200 V- 1 sec.) Leakage Current is less than 5mA .
Residual Moisture / Residual Impurities		150 mg Max. / 70 mg Max.

1.5 Electrical Component

Part Name	Specification
Running Capacitor	50 μF / 400 VAC
Overload Protector	Internal Type

2.Delivered Parts List

Parts Name	Type (Model)	EA	Parts Dwg. NO.(LG)	Supply	
Compressor	GJ222PAA	1	-	YES	NO
O.L.P	Internal Type	1	-	YES	NO
Spring, O.L.P	-	1	4970U - L002A	YES	NO
Cover, Terminal	-	1	3550U - L005A	YES	NO
Gasket	-	1	4986U - L004A	YES	NO
Nut, Hexagon Flange	-	1	1NFZU - L001A	YES	NO
Washer, Plain Cover	-	1	1WPZU - L001A	YES	NO
Grommet	-	3	4022U - L002A	YES	NO
Sleeve, Grommet	-	3	4816U - L001D	YES	NO
Bolt, Stud	-	3	1BSZU - L002B	YES	NO
Washer, Plain	-	3	1WPZU - L003A	YES	NO
Nut, Hexagon	-	1	1NHZU - L001A	YES	NO
Capacitor			-	YES	NO

※) Refer to Attachments (Accessory Parts Drawings.)

Ref. No.	LGACC-041111-195
Date	Nov. 11. 2004
Rev. No.	REV. 0
Rev. Date	-

3. Operating Limit

Discharge Pressure	[kg / cm ² G]	42 Max.
Suction Pressure	[kg / cm ² G]	1.0 ~ 7.0
Motor Coil Temp.	[°C]	135 Max.

Refrigerant Charge Limit	1,300 g Max. (Split , H/Pump)
Continuous Flood Back	Continuous Flood Back before the accumulator should not be more than 10% of the total circulation quantity of refrigerant.
On/Off Interval & Cycles	On / Off = 3 Minutes / 3 Minutes 20,000 Cycles or less
Voltage Range	Rated Voltage ± 10 %
Frequency Range	Rated Frequency ± 2 %
Pressure Difference in Operating	The Pressure Difference in operating shall be 0.49 MPa or more, but 3 minutes starting excluded.
Pressure Difference at Starting	When starting, discharge pressure is balanced with suction pressure.
Tilt in Operation	The allowable tilt of the compressor in operation shall be 5 ° or less

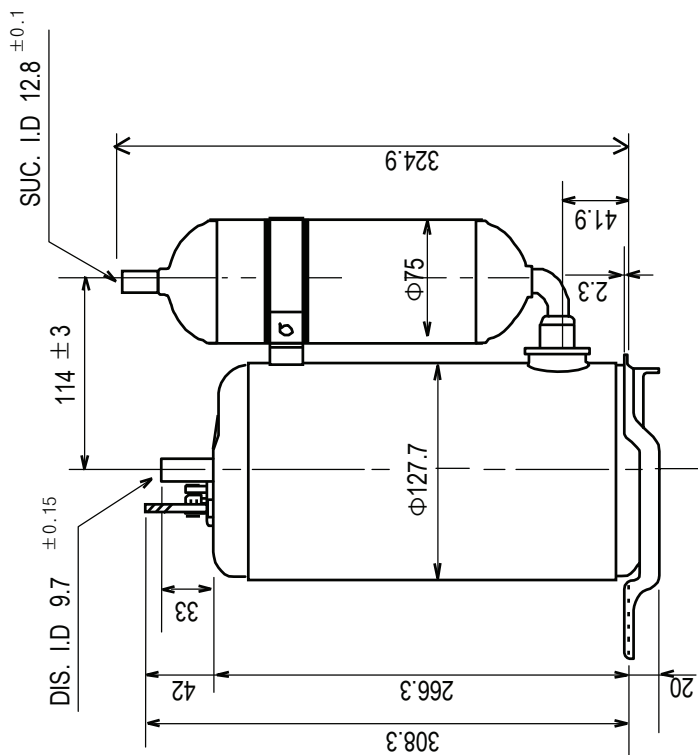
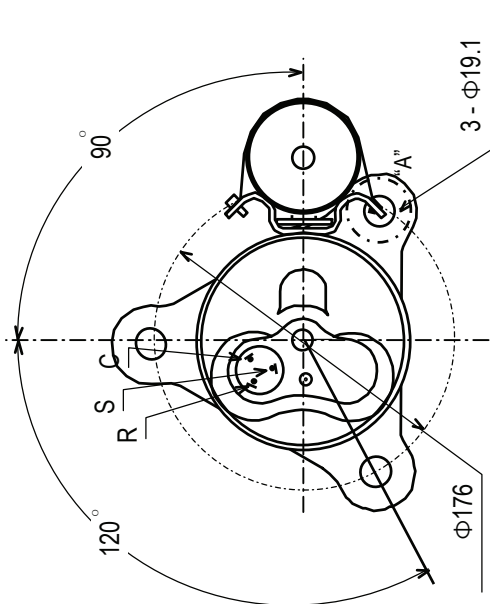
* Effective Period of This Document *

This document will be effective after LG's receipt with your authorized signature.
When design modification is approved by the customer, the current document is unavailable.

* LABEL *



Ref. No.	LGACC-041111-195
Date	Nov. 11. 2004
Rev. No.	REV. 0
Rev. Date	-



NOTES

1. PAINTING : BLACK PAINT (ELECTRO DEPOSITION)
2. OIL : FVC68D (Ether) OR EQUIVALENT 500 cc CHARGED
3. NITROGEN CHARGED AFTER DEHYDRATION

UNIT	mm	SCALE	N / S
DES. ENGR.	J. T. KIM	CHF. ENGR.	H. C. JEONG
Nov. 11. 2004		Nov. 11. 2004	
LG Electronics Inc. A/C Comp. Division		CUSTOMER EMBRITAL	
COMP. OUT LINE			
GJ222PAA			