

Ref. No.	LGETA-120612-1345
Date	Jun.12th, 2012
Rev. No.	REV. 0
Rev. Date	-

1.Specification

1.1 Compressor

1	Compressor Model Name	GA066PAC
2	Compressor Type	Hermetic Motor Compressor
3	Compression Type	Rotary Type (Rolling Piston Type)
4	Displacement	6.6 cm ³ / rev
5	Refrigerant	R410A
6	Oil / Oil Charging Amount	POE or PVE 230 ± 5 cc
7	Nitrogen Gas Holding Pressure	0.4 ± 0.2 kg/cm ² G
8	Painting	Black Color Paint
9	Net Weight (Including Oil)	8.6 kg
10	Suction Tube I.D	∅ 9.7 ^{+0.15} ₀ mm
11	Discharge Tube I.D	∅ 8.06 ^{+0.1} ₀ mm

1.2 Motor



Motor Type / Starting Type	Single Phase Induction Motor / PSC	
Pole / Rated Output	2 Pole / 440watts	
Power Source	1 Ph - 220-240 volt - 50 Hz	
Rated Revolution	2,887/2905 rpm	
Insulation Class	E Class	
Winding Resistance (at 75 °C)	Main	8.93 ± 7% ohm
	Sub	5.51 ± 7% ohm

Ref. No.	LGETA-120612-1345
Date	Jun.12th, 2012
Rev. No.	REV. 0
Rev. Date	-

1.3 Performance

		220 V	240 V
Cooling Capacity (± 5%)	[BTU/h]	5,270	5,330
	[W]	1,545	1,562
Power Input (± 5%)	[watts]	555	570
EER (± 5%)	[BTU/wh]	9.5	9.35
Running Current	[A]	2.5	2.4
Locked Rotor Ampere	[A]	-	12
Sound Level	[dB(A)]	-	59 ↓
Acceleration	[gal]	-	2,000 max

Starting Condition	Specification	Pressure Condition
at Normal Condition	start at 85% of Rated Voltage (187 Volt)	Ps / Pd = 9.12 / 33.45 kg/cm ² G
at Overload Condition	start at 90% of Rated Voltage (198 Volt)	Ps / Pd = 10.14/41.38 kg/cm ² G

※) Rating Conditions

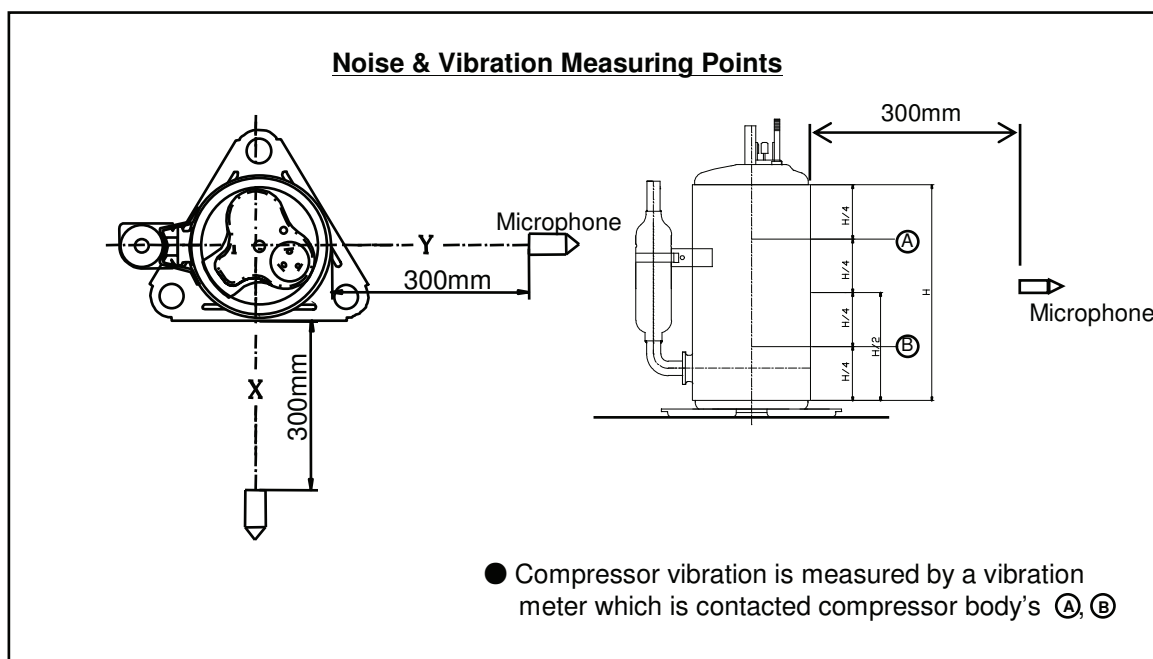
Cond. Temp. : 54.4°C (130 °F)

Return Gas Temp. : 35.0 °C (95 °F)

Evap. Temp. : 7.2°C (45 °F)



Liquid Temp. : 46.1 °C (115 °F)

Ambient Temp. : 35.0 °C (95 °F)



Ref. No.	LGETA-120612-1345
Date	Jun.12th, 2012
Rev. No.	REV. 0
Rev. Date	-

1.4 Others

Leak Tight Pressure	High Pressure Side	38 kg/cm ² G
	Lower Pressure Side	- kg/cm ² G
Hydrostatic Strength Pressure	High Pressure Side	170 kg/cm ² G
	Lower Pressure Side	69 kg/cm ² G
Insulation Resistance (with 500V D.C Mega Tester) 		50 MΩ Min.
Withstand Voltage 		at 1,800V - 1 min.(2,200 V- 1 sec.) Leakage Current is less than 5 mA.
Residual Moisture / Residual Impurities		40 mg Max. / 70 mg Max.

1.5 Electrical Component

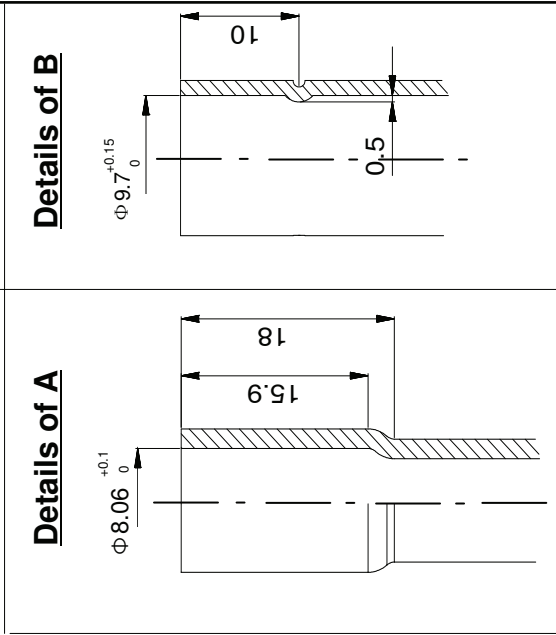
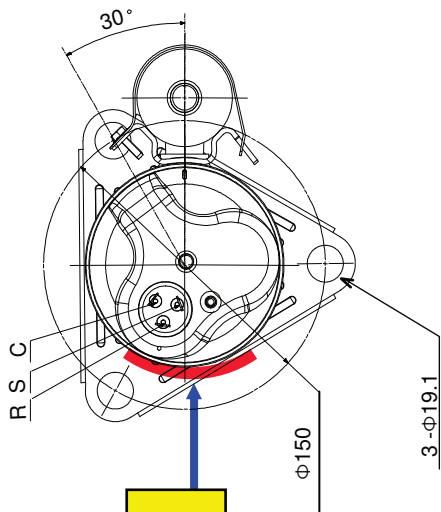
Part Name	Specification
Running Capacitor	25 MFD / 370 VAC
Overload Protector 	MRA12100-12026

2. Delivered Parts List

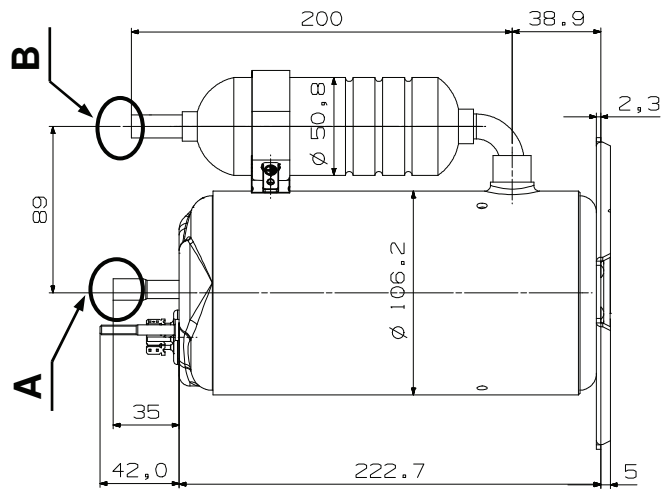
Parts Name	Type (Model)	EA	Parts Dwg. No.	Supply	
			LG		
Compressor	GA066PAC	1	-	<input checked="" type="checkbox"/>	<input type="checkbox"/>
O.L.P	MRA12100-12026	1	6750U-L047A	<input checked="" type="checkbox"/>	<input type="checkbox"/>
Cover, Terminal	-	1	3550U-L004B	<input checked="" type="checkbox"/>	<input type="checkbox"/>
Gasket	-	1	4986UTL001H	<input checked="" type="checkbox"/>	<input type="checkbox"/>
Nut, Hexagon Flange	-	1	1NZZUTL001A	<input checked="" type="checkbox"/>	<input type="checkbox"/>
Washer, Plain Cover	-	1	1WZZUTL001A	<input checked="" type="checkbox"/>	<input type="checkbox"/>
Grommet	-	3	4022UTL001A	<input checked="" type="checkbox"/>	<input type="checkbox"/>
Bolt, Stud	-	3	-	YES	<input type="checkbox"/>
Washer, Plain	-	3	-	YES	<input type="checkbox"/>
Nut, Hexagon	-	3	-	YES	<input type="checkbox"/>
Capacitor	-	1	-	YES	<input type="checkbox"/>

※) Refer to Attachments (Accessory Parts Drawings.)

Ref. No.	LGETA-120612-1345
Date	Jun.12th, 2012
Rev. No.	REV.0
Rev. Date	-



- NOTES
1. PAINTING : BLACK PAINT (ELECTRO DEPOSITION)
 2. OIL : POE or PVE 230±5 cc CHARGED
 3. NITROGEN CHARGED AFTER DEHYDRATION



UNIT	mm	SCALE	N / S
DES. ENGR.	Ying Ma	CHF. ENGR.	S.M.Byun
Jun.12th, 2012	Ying Ma	Jun.12th, 2012	S.M.Byun
LG Electronics (Tianjin) Appliance Co., Ltd		CUSTOMER	Embrital
COMP. OUT LINE			
GA066PAC			