

Ref. No.	LGETA-141007-1671
Issued Date	2014.10.07
Rev. No.	Rev. 0
Rev. Date	-

1. Specification

1.1 Compressor

1	Model Name	GKS134PBA
2	Compressor Type	Hermetic Motor Compressor
3	Compression Type	Rotary Type (Rolling Piston Type)
4	Application	Refrigeration system (Cooling & Heating)
5	Refrigerant	R410a
6	Safety Approval	VDE
7	Oil / Oil Charging Amount	POE or PVE / 350 cc ±5
8	Displacement	12.8 cm ³ / rev
9	Painting	Black Color Paint
10	Net Weight (Including Oil)	12.2 kg
11	Suction Tube I.D	Φ 12.8 ^{+0.15} ₀ mm
12	Discharge Tube I.D	Φ 8.06 ^{+0.1} ₀ mm

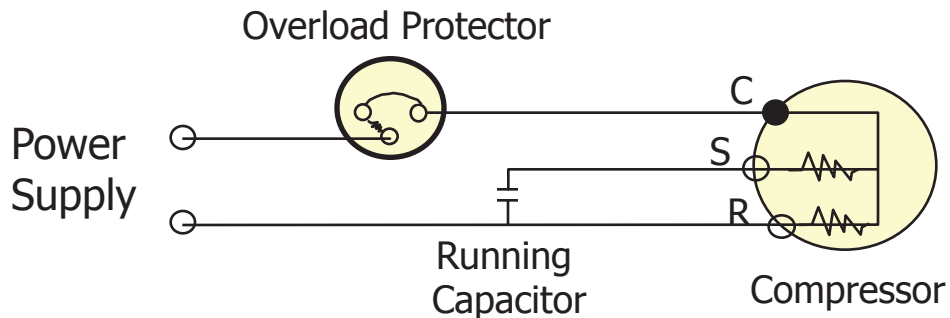
1.2 Motor

Safety

Motor Type / Starting Type	Single Phase Induction Motor / PSC	
Pole / Rated Output	2 Pole / 900 Watts	
Power Source	1Ph – 220/240 Volts – 50Hz	
Rated Revolution	2,869/2,892 rpm	
Insulation Class	E Class	
Windings Resistance (at 75 °C)	Main	4.52 ± 7% Ohms
	Sub	3.76 ± 7% Ohms
Locked Rotor Ampere	23 A	

Ref. No.	LGETA-141007-1671
Issued Date	2014.10.07
Rev. No.	Rev. 0
Rev. Date	-

1.3 Wiring diagram



※ Make Sure to connect right way same with the wiring diagram.

1.4 Electrical Component

Running Capacitor	45 MFD / 370 VAC
Over Load Protector	MRA12150-12027

1.5 Performance

Voltage		220 V	240 V
Cooling Capacity (-5% ↑)	[BTU/h]	10,850	10,950
	[W]	3,180	3,209
Power Input (+5% ↓)	[W]	1,065	1,095
EER (-5% ↑)	[BTU/W hr]	10.2	10.0
	[W / W]	2.99	2.93
Running Current	[A]	5.2	4.9

☞ Rated Conditions (ASHRAE-T Condition)

Cond. Temp. : 54.4 °C (130 °F)

Evap. Temp. : 7.2 °C (45 °F)

Return Gas Temp. : 35.0 °C (95 °F)

Liquid Temp. : 46.1 °C (115 °F)

Ambient Temp. : 35.0 °C (95 °F)

Ref. No.	LGETA-141007-1671
Issued Date	2014.10.07
Rev. No.	Rev. 0
Rev. Date	-

1.7 Minimum Starting Voltage

Cold Start - Temp. Condition : 35°C - Balanced pressure : Pd – Ps ≤ 0.5 kgf/cm ²	187 Volts Max.
---	----------------

1.8 Voltage Range

at Standard Condition	187 ~ 264 Volts
at Overload Condition	198 ~ 264 Volts

☞ Test Conditions

	Standard Condition	Overload Condition
Con. Temp (°C)	54	64
Eva. Temp (°C)	7	10
Return Gas. Temp (°C)	35	25
Ambient Temp (°C)	35	43

1.9 Others

Leak Tight Pressure	High Pressure Side	40 kgf / cm ² G
	Low Pressure Side	-
Hydrostatic strength Pressure	High Pressure Side	170 kgf / cm ² G
	Low Pressure Side	69 kgf / cm ² G
Insulation Resistance (with 500V D.C Mega Tester)		50 MΩ Min.
Withstand Voltage		At 2,200 V / 1 Sec. Leakage Current is less than 5 mA
Residual Moisture (Karl Fisher Method)		60 mg Max.
* Residual Impurities		70 mg Max

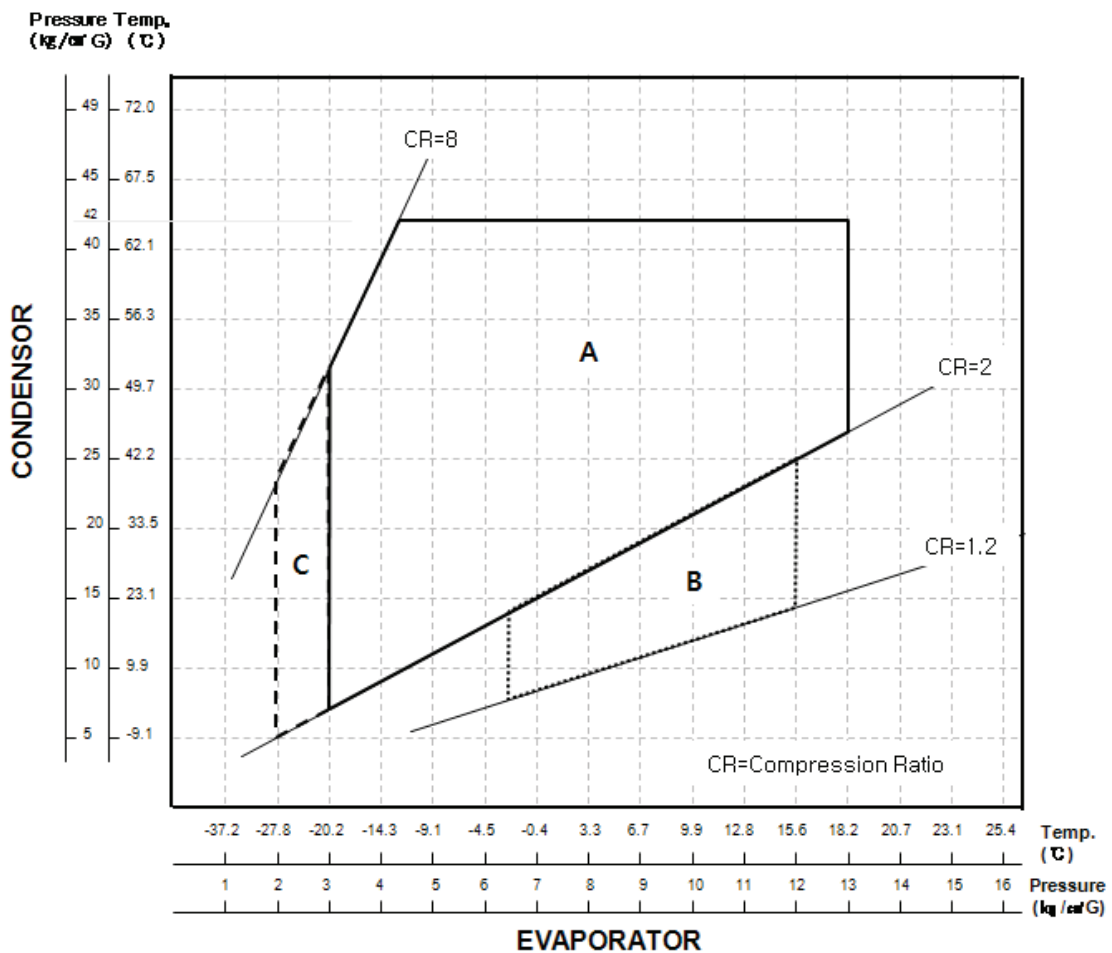
*) Each part was measured separately

Ref. No.	LGETA-141007-1671
Issued Date	2014.10.07
Rev. No.	Rev. 0
Rev. Date	-

3. Operating Limit

3.1 Operation Range

Discharge Pressure	[kgf / cm ² G]	42 Max
Suction Pressure	[kgf / cm ² G]	3.0 ~ 13.0
Discharge Pipe Temp.	[°C]	110 Max.
Motor Coil Temp.	[°C]	125 Max.

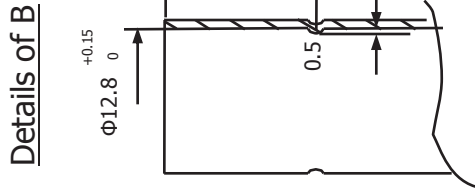
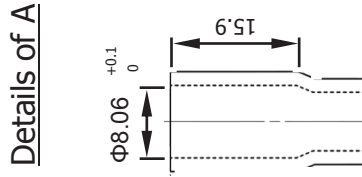
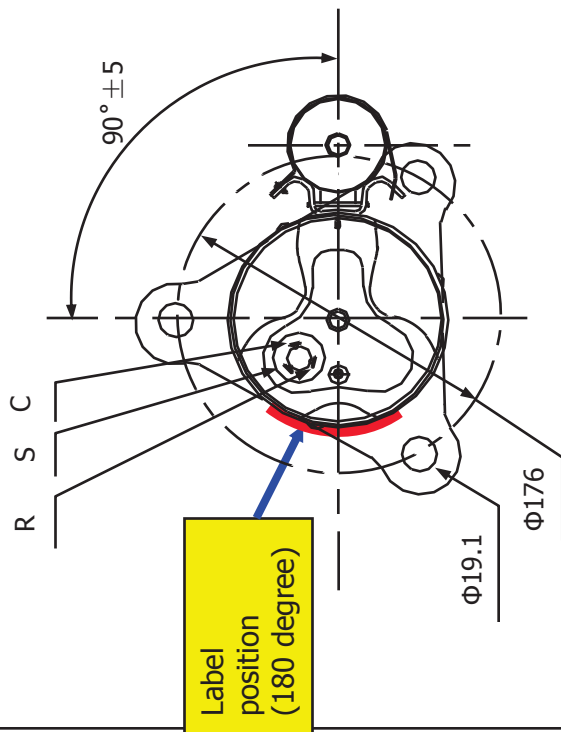


Area A : Normal Operating Zone

Area B : High Density Flow Zone
-During starting within 3 minutes

Area C : Low Pressure Zone(defrosting & re-starting)
-Running time less than 3 minutes.
-Should be checked liquid back

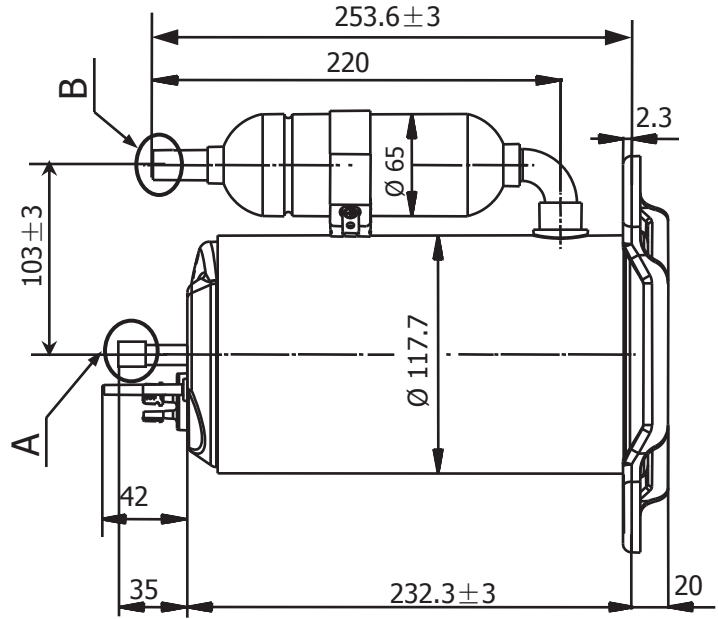
Ref. No.	LGETA-141007-1671
Issued date	2014.10.07
Rev. No.	Rev.0
Rev. Date	-



Detail of Discharge Tube Detail of Suction Tube

NOTES

1. PAINTING : BLACK PAINT (ELECTRO DEPOSITION)
2. OIL : POE or PVE 350 cc ± 5 CHARGED
3. NITROGEN CHARGED AFTER DEHYDRATION
4. UNIT : mm



UNIT	mm	SCALE	N / S
DES. ENGR.		CHF. ENGR.	
2014.10.07		2014.10.07	
Yufang Zang		S.M. BYUN	
LG Electronics(Tianjin) Appliance Co.,Ltd		CUSTOMER	Embrital

COMP. OUT LINE

GKS134PBA